

Native Plant Demonstration Garden at Portola Valley Town Center

This is a guide to some of the showy, dependable, and mostly native plants at Portola Valley Town Center. Plants are listed by common name and scientific name (and cultivar, if known) for each of the 23 numbered beds on the overview map at right.

The following pages have subsets of the map along with plant lists and some plant photographs that illustrate the diversity of color and texture of our native plants. All of the photographs were taken at the Town Center garden.

The Town Center's plantings contribute to a peaceful, varied environment that attracts and benefits wildlife as well as people. Through the seasons you can see plants at different life stages; observe insects and birds collecting nectar, pollen, fruits, and seeds; view combinations of plants that naturally do well together because of similar requirements for sunlight, water, and drainage; and enjoy landscaping that is successful and beautiful without pesticides or supplemental watering after establishment.

More information on landscaping with native, water-wise plants that are adapted to local conditions can be found at:
<http://portolavalley.net/sustainability/native-plants-and-landscaping>

A one-page brochure of the plant lists and map designed for printing on legal-sized paper is also available to download.

Portola Valley Conservation Committee
December 2020

Plant types:

- F ferns, horsetails
- G grasses, rushes, sedges
- W wildflowers, non-woody perennials & groundcovers
- SS subshrubs & more-or-less woody groundcovers
- S shrubs
- T trees

Scientific names are based on The Jepson Manual, 2nd edition. If the scientific name has changed recently, the earlier genus name is in parentheses. For example, "*Frangula californica* (*Rhamnus c.*)" indicates that the earlier name was *Rhamnus californica*.



Beds 1-6

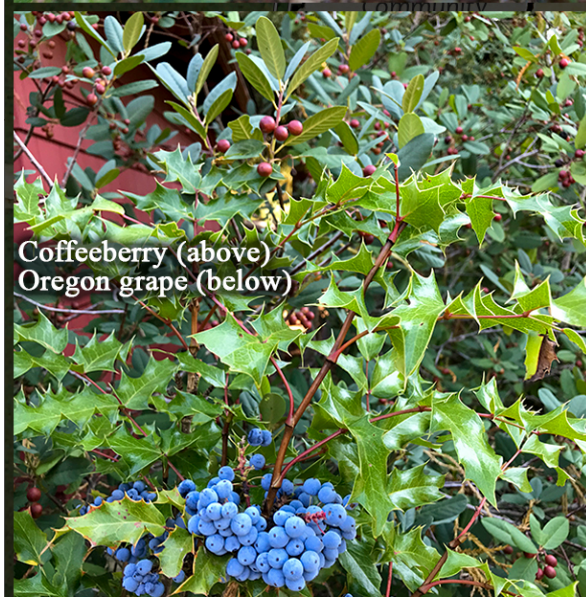
Bed	Common Name	Scientific Name	Type
1	California fescue	<i>Festuca californica</i>	G
	Blue flax	<i>Linum lewisii</i>	W
	Crimson columbine	<i>Aquilegia formosa</i>	W
	Bush anemone	<i>Carpinteria californica</i>	S
	California coffeeberry	<i>Frangula californica (Rhamnus c.)</i>	S
	California huckleberry	<i>Vaccinium ovatum</i>	S
	Oregon grape	<i>Berberis aquifolium</i>	S
	Spicebush	<i>Calycanthus occidentalis</i>	S
	Toyon, Christmas berry	<i>Heteromeles arbutifolia</i>	S
2	Blue wild-rye	<i>Elymus glaucus</i>	G
	Alum root	<i>Heuchera micrantha</i>	W
	Wood strawberry	<i>Fragaria vesca</i>	W
	Red-flowered buckwheat	<i>Eriogonum grande var. rubescens</i>	SS
	Bush anemone	<i>Carpinteria californica</i>	S
	Island snapdragon	<i>Gambelia speciosa (Galvezia s.)</i>	S
	Red-flowering currant	<i>Ribes sanguineum</i>	S
	Western redbud	<i>Cercis occidentalis</i>	S,T
	3	Pacific aster	<i>Symphyotrichum chilense (Aster c.)</i>
California buckwheat		<i>Eriogonum fasciculatum</i>	SS
Coast buckwheat		<i>Eriogonum latifolium</i>	SS
Honeysuckle		<i>Lonicera hispidula</i>	SS
California coffeeberry		<i>Frangula californica (Rhamnus c.)</i>	S
Fuschia-flowered gooseberry		<i>Ribes speciosum</i>	S
Howard McMinn manzanita		<i>Arctostaphylos densiflora "McMinn"</i>	S
Ray Hartman California lilac		<i>Ceanothus "Ray Hartman"</i>	S
Santa Catalina Island currant		<i>Ribes viburnifolium</i>	S
4	Douglas' iris	<i>Iris douglasiana</i>	W
	Robust verbena	<i>Verbena lasiostachys</i>	W
	California flannel bush	<i>Fremontodendron californicum</i>	S
	Howard McMinn manzanita	<i>Arctostaphylos densiflora "McMinn"</i>	S
	Rock-rose (non-native)	<i>Cistus (native to Medit.)</i>	S
	Saint Catherine's lace	<i>Eriogonum giganteum</i>	S
	Western redbud	<i>Cercis occidentalis</i>	S,T
	5	Blue wild-rye	<i>Elymus glaucus</i>
California poppy		<i>Eschscholzia californica</i>	W
California sagebrush		<i>Artemisia californica</i>	S
Cleveland sage		<i>Salvia clevelandii</i>	S
Coast silk-tassel		<i>Garrya elliptica</i>	S
Coyote brush		<i>Baccharis pilularis</i>	S
Lemonade berry		<i>Rhus integrifolia</i>	S
Snowberry		<i>Symphoricarpos albus</i>	S
Toyon, Christmas berry		<i>Heteromeles arbutifolia</i>	S
6		Western sword fern	<i>Polystichum munitum</i>
	Dwarf coyote brush	<i>Baccharis pilularis (Twin Peaks)</i>	SS
	Dwarf manzanita	<i>Arctostaphylos uva-ursi</i>	SS
	Oregon grape	<i>Berberis aquifolium "compacta"</i>	SS



Flannel bush



Manzanita



Coffeeberry (above)
Oregon grape (below)



Fuschia-flowered gooseberry



Beds 1-6



Bush anemone

Beds 7-11

Bed	Common Name	Scientific Name	Type
7	California poppy	<i>Eschscholzia californica</i>	W
	Douglas' iris	<i>Iris douglasiana</i>	W
	Foothill penstemon	<i>Penstemon heterophyllus</i>	W
	Seaside daisy	<i>Erigeron glaucus</i>	W
	Western blue-eyed grass	<i>Sisyrinchium bellum</i>	W
	Yarrow	<i>Achillea millefolium</i>	W
	Creeping sage	<i>Salvia "bee's bliss"</i>	SS
	Coyote brush	<i>Baccharis pilularis</i>	S
	California buckeye	<i>Aesculus californica</i>	T
	Valley oak	<i>Quercus lobata</i>	T
8	<i>This bed receives additional moisture and has become predominantly non-native, but a few native species are noteworthy:</i>		
	Western sword fern	<i>Polystichum munitum</i>	F
	Douglas' iris	<i>Iris douglasiana</i>	W
	Seaside daisy	<i>Erigeron glaucus</i>	W
	Emerald carpet manzanita	<i>Arctostaphylos "emerald carpet"</i>	SS
	California sagebrush	<i>Artemisia californica</i>	S
	Blue elderberry	<i>Sambucus nigra ssp. caerulea</i>	S,T
9	Giant chain fern	<i>Woodwardia fimbriata</i>	F
	Western sword fern	<i>Polystichum munitum</i>	F
	Purple needle grass	<i>Stipa pulchra (Nassella p.)</i>	G
	Alum root	<i>Heuchera micrantha</i>	W
	Crimson columbine	<i>Aquilegia formosa</i>	W
	Douglas' iris	<i>Iris douglasiana</i>	W
	Yerba buena	<i>Clinopodium douglasii (Satureja d.)</i>	W
	Coast redwood	<i>Sequoia sempervirens</i>	T
10	Deer grass	<i>Muhlenbergia rigens</i>	G
	Spreading rush	<i>Juncus patens</i>	G
	Alum root	<i>Heuchera micrantha</i>	W
	Crimson columbine	<i>Aquilegia formosa</i>	W
	Pacific aster	<i>Symphotrichum chilense (Aster c.)</i>	W
	Redwood sorrel	<i>Oxalis oregana</i>	W
	Seaside daisy	<i>Erigeron glaucus</i>	W
	Western blue-eyed grass	<i>Sisyrinchium bellum</i>	W
	Yerba buena	<i>Clinopodium douglasii (Satureja d.)</i>	W
	Coyote brush	<i>Baccharis pilularis</i>	S
	Toyon, Christmas berry	<i>Heteromeles arbutifolia</i>	S
Mountain dogwood	<i>Cornus nuttallii</i>	S,T	
11	Deer grass	<i>Muhlenbergia rigens</i>	G
	Purple needle grass	<i>Stipa pulchra (Nassella p.)</i>	G
	Douglas' iris	<i>Iris douglasiana</i>	W
	Yarrow	<i>Achillea millefolium</i>	W
	Valley oak	<i>Quercus lobata</i>	T



Beds 12-18

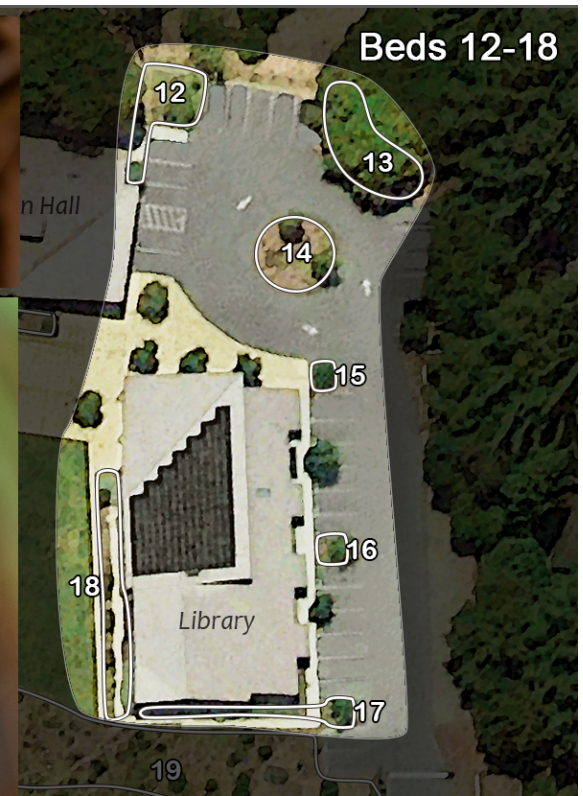
Bed	Common Name	Scientific Name	Type
12	Douglas' iris	<i>Iris douglasiana</i>	W
	Creeping sage	<i>Salvia "bee's bliss"</i>	SS
	Red-flowering currant	<i>Ribes sanguineum</i>	S
	Coast live oak	<i>Quercus agrifolia</i>	T
13	Douglas' iris	<i>Iris douglasiana</i>	W
	Coast live oak	<i>Quercus agrifolia</i>	T
14	Deer grass	<i>Muhlenbergia rigens</i>	G
	Purple needle grass	<i>Stipa pulchra (Nassella p.)</i>	G
	California fuchsia	<i>Epilobium canum (Zauschneria c.)</i>	W
	Douglas' iris	<i>Iris douglasiana</i>	W
	Foothill penstemon	<i>Penstemon heterophyllus</i>	W
	Creeping sage	<i>Salvia "bee's bliss"</i>	SS
	Dwarf willow	<i>Salix (species not known)</i>	S
	Valley oak	<i>Quercus lobata</i>	T
15, 16	Purple needle grass	<i>Stipa pulchra (Nassella p.)</i>	G
	Coyote mint	<i>Monardella villosa</i>	W
	Douglas' iris	<i>Iris douglasiana</i>	W
	Foothill penstemon	<i>Penstemon heterophyllus</i>	W
	Seaside daisy	<i>Erigeron glaucus</i>	W
	Creeping sage	<i>Salvia "bee's bliss"</i>	SS
17	Blue wild-rye	<i>Elymus glaucus</i>	G
	California poppy	<i>Eschscholzia californica</i>	W
	Coyote mint	<i>Monardella villosa</i>	W
	Douglas' iris	<i>Iris douglasiana</i>	W
	Pacific sanicle	<i>Sanicula crassicaulis</i>	W
	Seaside daisy	<i>Erigeron glaucus</i>	W
	Western blue-eyed grass	<i>Sisyrinchium bellum</i>	W
	Wood strawberry	<i>Fragaria vesca</i>	W
	Autumn sage (non-native)	<i>Salvia greggii (native Texas & Mex.)</i>	SS
	California coffeeberry	<i>Frangula californica (Rhamnus c.)</i>	S
18	Deer grass	<i>Muhlenbergia rigens</i>	G
	Douglas' iris	<i>Iris douglasiana</i>	W
	Creeping sage	<i>Salvia "bee's bliss"</i>	SS
	Manzanita	<i>Arctostaphylos densiflora</i>	S



Seaside daisy



Blue-eyed grass



Beds 12-18



Foothill penstemon



California poppy



Salvia bee's bliss

Beds 19-23

Bed	Common Name	Scientific Name	Type	
19	Gumplant	<i>Grindelia hirsutula</i>	W	
	Narrow-leaf milkweed	<i>Asclepias fascicularis</i>	W	
	Yarrow	<i>Achillea millefolium</i>	W	
	California rose	<i>Rosa californica</i>	S	
	California sagebrush	<i>Artemisia californica</i>	S	
	Straggly gooseberry	<i>Ribes divaricatum</i>	S	
	Coyote brush	<i>Baccharis pilularis</i>	S	
	California buckeye	<i>Aesculus californica</i>	T	
	20	Horsetail	<i>Equisetum arvense</i>	F
		Pacific rush	<i>Juncus effusus</i> ssp. <i>pacificus</i>	G
Spreading rush		<i>Juncus patens</i>	G	
Rosilla, Sneezeweed		<i>Helenium puberulum</i>	W	
American dogwood		<i>Cornus sericea</i>	S	
Pacific ninebark		<i>Physocarpus capitatus</i>	S	
Snowberry		<i>Symphoricarpos albus</i>	S	
Twinberry		<i>Lonicera involucrata</i>	S	
Arroyo willow		<i>Salix lasiolepis</i>	T	
Pacific willow		<i>Salix lasiandra</i>	T	
21	California brome	<i>Bromus carinatus</i>	G	
	Purple needle grass	<i>Stipa pulchra</i> (<i>Nassella</i> p.)	G	
	California figwort	<i>Scrophularia californica</i>	W	
	California fuchsia	<i>Epilobium canum</i> (<i>Zauschneria</i> c.)	W	
	California poppy	<i>Eschscholzia californica</i>	W	
	Douglas' iris	<i>Iris douglasiana</i>	W	
	Gumplant	<i>Grindelia hirsutula</i>	W	
	Narrow-leaf milkweed	<i>Asclepias fascicularis</i>	W	
	Pacific aster	<i>Symphotrichum chilense</i> (<i>Aster</i> c.)	W	
	Self-heal	<i>Prunella vulgaris</i>	W	
22	California rose	<i>Rosa californica</i>	S	
	California buckeye	<i>Aesculus californica</i>	T	
	California fescue	<i>Festuca californica</i>	G	
	Deer grass	<i>Muhlenbergia rigens</i>	G	
	Blue flax	<i>Linum lewisii</i>	W	
	California fuchsia	<i>Epilobium canum</i> (<i>Zauschneria</i> c.)	W	
	California poppy	<i>Eschscholzia californica</i>	W	
	Coyote mint	<i>Monardella villosa</i>	W	
	Narrow-leaf milkweed	<i>Asclepias fascicularis</i>	W	
	Pacific aster	<i>Symphotrichum chilense</i> (<i>Aster</i> c.)	W	
23	Seaside daisy	<i>Erigeron glaucus</i>	W	
	Showy milkweed	<i>Asclepias speciosa</i>	W	
	Yarrow	<i>Achillea millefolium</i>	W	
	Coast buckwheat	<i>Eriogonum latifolium</i>	SS	
	Creeping sage	<i>Salvia</i> "bee's bliss"	SS	
	Shasta sulfur buckwheat	<i>Eriogonum umbellatum</i>	SS	
	California lilac	<i>Ceanothus</i>	S	
	California sagebrush	<i>Artemisia californica</i>	S	
	Creeping sage	<i>Salvia</i> "bee's bliss"	SS	

