



## Community Planning Assistance for Wildfire

### What We Do

Community Planning Assistance for Wildfire (CPAW) works with communities to reduce wildfire risks through improved land use planning. CPAW provides communities with professional assistance from planners, researchers, mitigation specialists, wildfire risk modelers, and other experts to integrate wildfire mitigation into the development planning process.

Diverse tools are available to every community. CPAW services are tailored to the needs, capacity, and resources of local partners and come at no cost to the community. CPAW services include:



#### LAND USE PLANNING

recommendations and expertise to incorporate wildfire mitigation into development plans and codes.



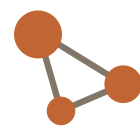
#### COMMUNICATION TOOLS

interactive products to increase understanding and dialogue on wildfire risks and effective mitigation strategies.



#### RESEARCH AND SCIENCE

innovative research and data analysis to support wildfire mitigation in wildfire-prone lands.



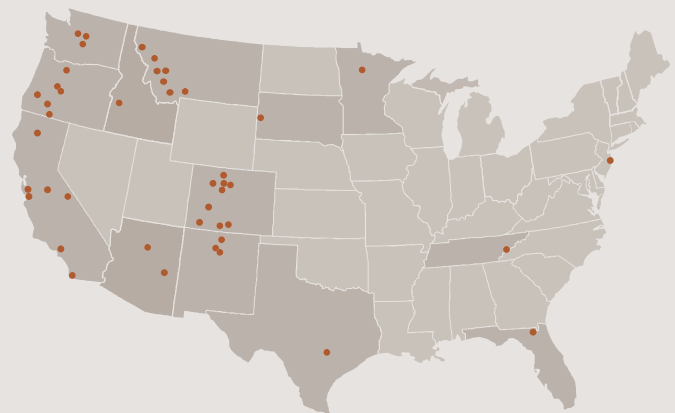
#### CAPACITY BUILDING

workshops, presentations, and webinars to facilitate learning, networking, and skills development to create fire-adapted communities.

### Where We Work

We work with towns, cities, and counties across the United States to reduce wildfire risks. Since our founding in 2015, we have worked with more than 80 communities in 14 states.

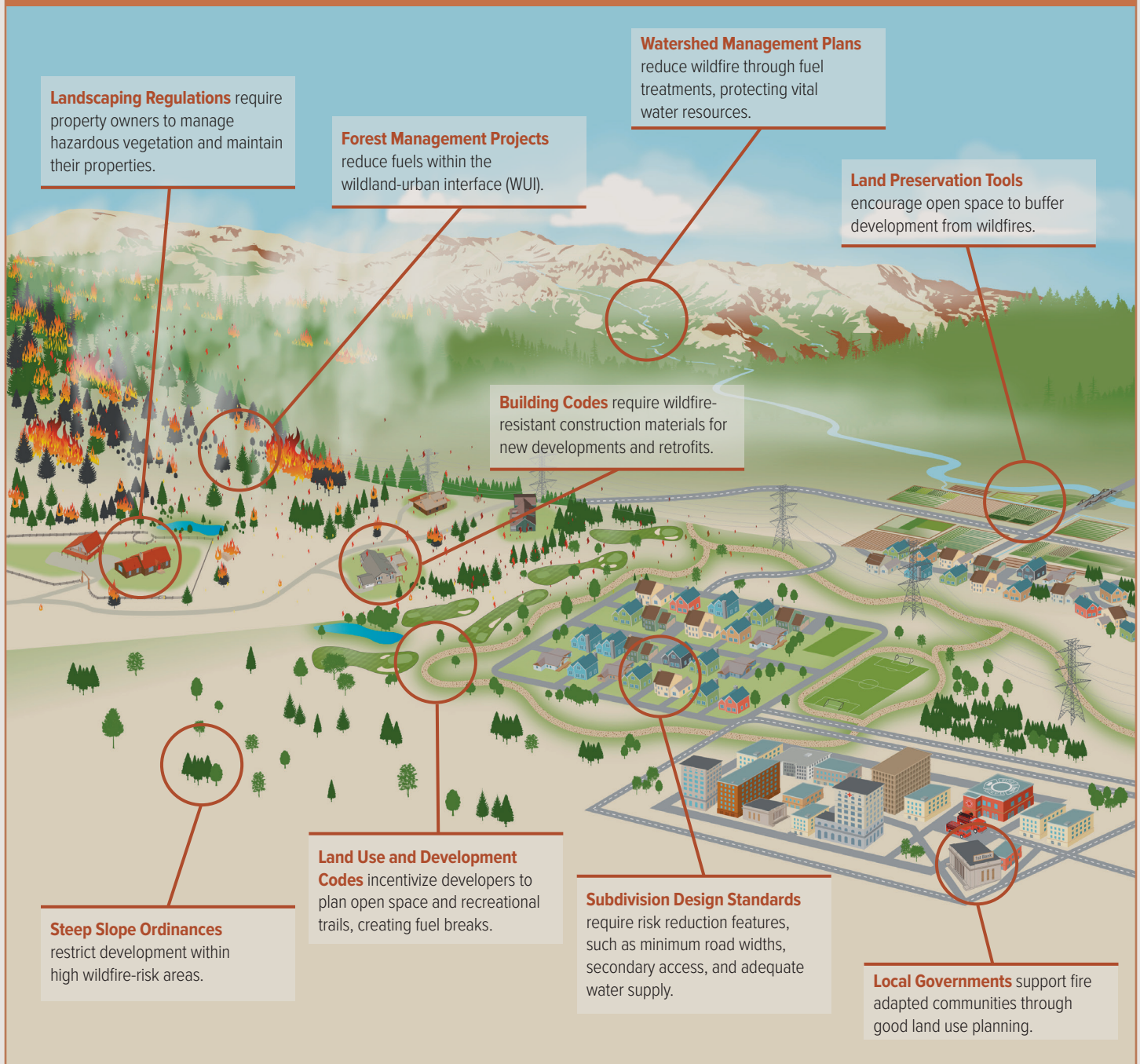
In each community we work with elected officials, land use planners, fire personnel, and other community leaders. We help identify the community wildfire risks, engage experts, broaden networks, and develop unique resources. Communities receive assistance for a minimum of one year.



# Tools

Land use planning tools to reduce wildfire risk can help communities determine where to allow development, what types of building materials will help keep people safe, and what infrastructure is needed to safely respond when disasters strike.

## Examples of Community Tools



[cpaw.headwaterseconomics.org](http://cpaw.headwaterseconomics.org)

CPAW is a program of Headwaters Economics. It is funded by grants from the U.S. Forest Service and private foundations. CPAW is an equal opportunity employer.