

TOWN OF PORTOLA VALLEY
Conservation Committee Meeting
February 27, 2024
7:00 PM

Catherine Magill, Chair
Judith Murphy, Vice Chair
Teresa Coleman, Secretary
Nona Chiariello, Member
Paul Heiple, Member
Marianne Plunder, Member
Megan Richards, Member
Dieter Walz, Member
Joerg Zimmerman, Member

REGULAR MEETING

HISTORIC SCHOOLHOUSE- 765 PORTOLA RD. – PORTOLA VALLEY, CA

REMOTE MEETING ADVISORY: On March 1, 2023, all committees in Portola Valley will return to conducting in-person meetings. A Zoom link will be provided for members of the public to participate remotely; however, the Town cannot guarantee there will be no technical issues with the software during the meeting. For best public participation results, attending the meeting in-person is advised.

ASSISTANCE FOR PEOPLE WITH DISABILITIES

In compliance with the Americans with Disabilities Act, if you need special assistance to participate in this meeting, please contact the Town Clerk at (650) 851-1700 or by email at towncenter@portolavalley.net. Notification 48 hours prior to the meeting will enable the Town to make reasonable arrangements to ensure accessibility to this meeting.

VIRTUAL PARTICIPATION VIA ZOOM

To access the meeting by computer:

Zoom link: <https://us06web.zoom.us/j/87321185355?pwd=o5zwuu6HBFmQcTvtz9ifadYm7pufUp.1>

Meet ID: 87321185355

Passcode: 173662

To access the meeting by phone:

1-669-900-6833 or 1-888-788-0099 (toll free)

- 1. CALL TO ORDER & ROLL CALL**
- 2. ORAL COMMUNICATIONS FOR ITEMS NOT ON THE AGENDA**
Speakers' time is limited to three minutes.
- 3. APPROVAL OF MINUTES:**
 - a. January 23, 2024
- 4. ELECTION OF OFFICERS**
- 5. SITE PERMITS:**
 - a. 440 Cervantes
- 6. TREE PERMITS:**
 - a. 20 Toro
 - b. 145 La Sandra
- 7. OLD BUSINESS:**
 - a. Oversight of Town-owned properties - Updates (Committee)
 - i. Town Center (Richards)
 - ii. Springdown (Magill)
 - iii. Frog Pond
 - b. Committee / Town Cooperation
 - i. Public Works (Magill)

- ii. Broom Pull - Sunday March 3 (Magill)
- iii. Advice to the ASCC on *Dittrichia* - Review edited language (Plunder)
- iv. Defensible space sub-committee – review of meeting with Fire Marshal (Chiariello)
- v. Trails and Paths (Coleman)
- c. Plants list and gallery (Magill)
- d. CC Routine Town Communications
 - i. Kudos (Plunder)
 - ii. Backyard Habitat (Plunder)
 - iii. Tip of the Month (Magill)
 - iv. What's Blooming Now? (Magill)

8. NEW BUSINESS

- a. Hawthorn's – discuss access and parking proposals from Mid-Pen (Appendix A)

9. ADJOURNMENT

The next regularly scheduled meeting date is March 26, 2024, 7:00 PM.

Land Acknowledgement:

The Town of Portola Valley acknowledges the colonial history of this land we dwell upon—the unceded territory of the Ramaytush (rah-my-toosh) Ohlone, Tamien Nation, and Muwekma (mah-WEK-mah) Ohlone, who endured a human and cultural genocide that included removal from their lands and their sacred relationship to the land. Portola Valley recognizes that we profit from the commodification of land seized from indigenous peoples and now bear the ecological consequences. We seek to understand the impact of these legacies on all beings and to find ways to make repair.



TOWN OF PORTOLA VALLEY
Conservation Committee Meeting
January 23, 2024, 2023
7:00 PM
In-person Meeting

CONSERVATION COMMITTEE MEETING MINUTES

1. Call to Order: The meeting was called to order at 7:02 PM

Roll Call:

Members present: T. Coleman, N. Freire, M. Plunder, C. Magill, M. Richards,
D. Walz, J. Zimmermann , N. Chiariello (via zoom)

Member absent: J. Murphy

Also present: M. Hufty (Town Councilmember liaison)

Guests: K. Giuliacci (Fire Marshal)

2. Oral Communications:

Nancy Freire was welcomed as a new Committee member.

C. Magill stated several potential parking areas have been proposed for the Hawthorns project (to be included as an agenda item for February meeting).

3. Approval of Minutes for November 28, 2023: The minutes were *approved unanimously* (J. Zimmermann, N. Freire and N. Chiariello abstained).

4. Site Permits

a. 80 Golden Oak has come up for ASCC review; C. Magill will join for site visit.

5. Tree Permits

none

6. Old Business

a. Oversight of Town-owned properties

i. Town Center – the subcommittee will perform a site walk-around.

ii. Springdown – no update.

iii. Frog Pond – J. Zimmermann will be reaching out to the school to go over the remaining punch list items.

iv. Shady Trail – M. Plunder stated the Town has not as yet done any removal of silt on the trail.

b. Committee/Town Cooperation

i. Public Works

Corte Madera tree removals – C. Magill, N. Chiariello, D. Walz and M. Richards reviewed the arborist report regarding the tree removals and are in agreement the removals are appropriate.

ii. Update on advice to ASCC on adding dittrichia removal to condition of approval – subcommittee (M. Plunder, M. Richards) to review proposed language provided by D. Walz and provide to the Committee

Action item: Revised/edited language regarding advice to the ASCC on dittrichia to be reviewed at the February meeting

iii. Wildfire Preparedness –

N. Chiariello stated there have been two meetings/workshops on the proposed ordinances on defensible space. The Conservation subcommittee (N. Chiariello, M. Plunder, M. Richards) are working with C. Taylor to clarify definitions for the draft ordinance., trying to develop guidelines to go to the Fire Marshal to help residents interpret the ordinance. K. Giuliacci stated she wants to incorporate the information from existing Conservation Committee documents regarding 0 – 5 feet defensible space thereby helping homeowners understand how to implement the requirement.

iii. Open Space – have not met since last update

iv. Trails and Paths – T. Coleman stated the concerns around the silting on Shady Trail and the Palmer Trail grading were shared with the Trails and Paths Committee.) meeting was canceled (no update)

vii. Broom Pull – C. Magill stated the broom pull is scheduled for Sunday, March 3rd. She requested Committee members provide her with any sites that are appropriate for broom removal

c. Website – Subcommittee (C. Magill, M. Plunder, M. Richards) met in December. M. Plunder wants to maintain the previously existing plant lists with photographs currently accessed via the Sustainability webpage (in addition to the revised and expanded Conservation plant lists); the Subcommittee agreed to come up with a proposed solution. N. Chiariello suggested the photographic list could be renamed as a “gallery” or the like.

d. Fencing and wildlife corridors – M. Plunder suggested leaving approximately 10% of a property(one acre or larger) accessible to wildlife

e. CC Routine Town Communications

i. Kudos (M. Plunder) – none

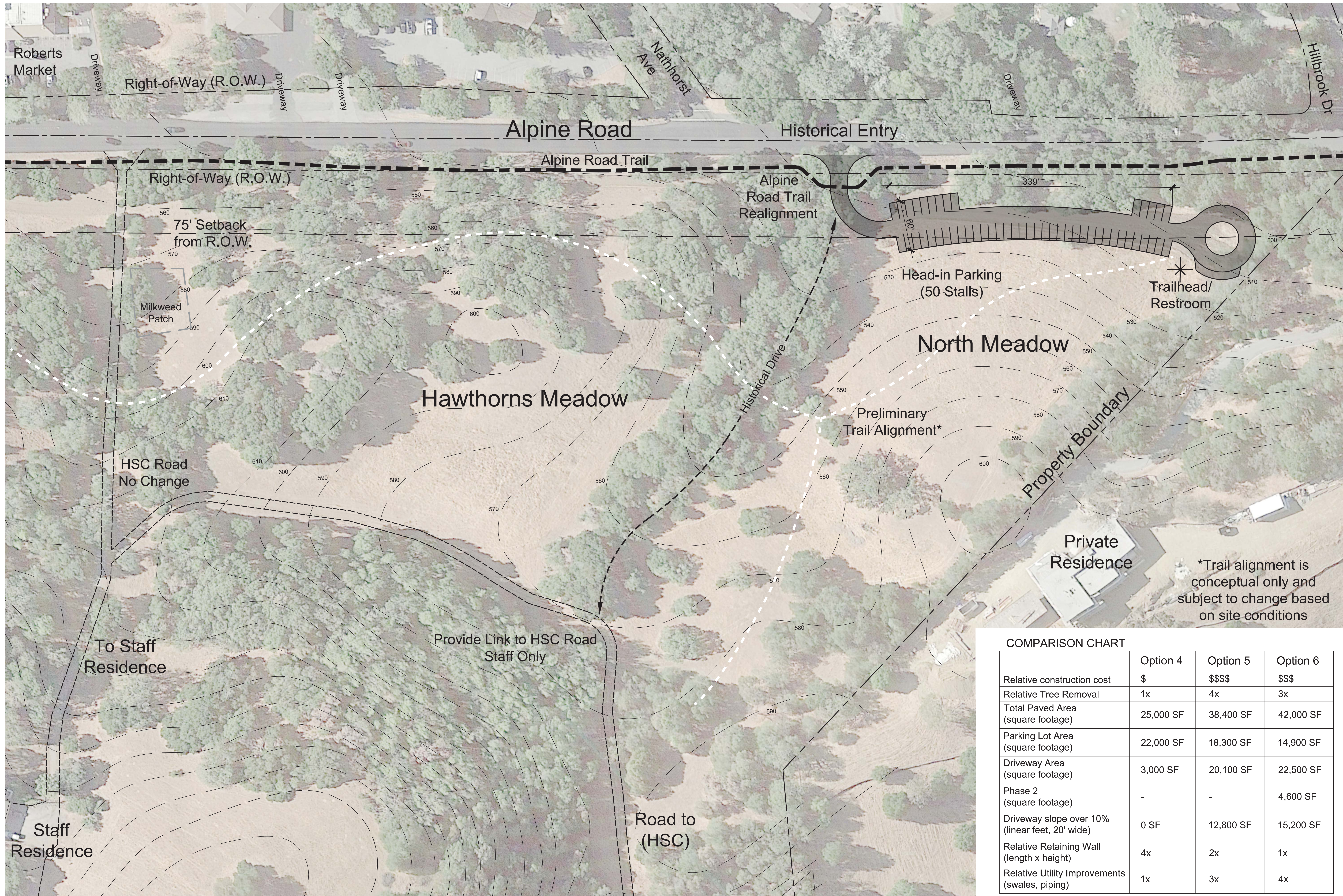
ii. Backyard habitat – (M. Plunder) no update

iii. Tip of the Month (C. Magill) – weed invasive seedlings (oxalis)

iv. What’s Blooming Now? (C. Magill) – ceanothus

Adjournment: 8:02 pm

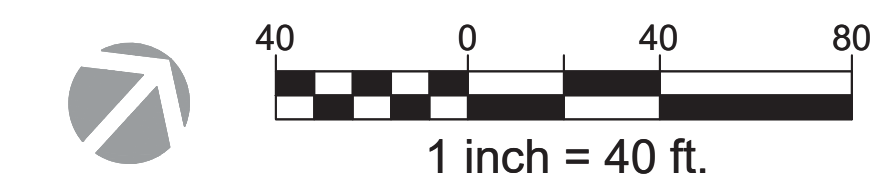
Date & Time of Next Meeting: Tuesday February 27, 2024 at 7:00 pm

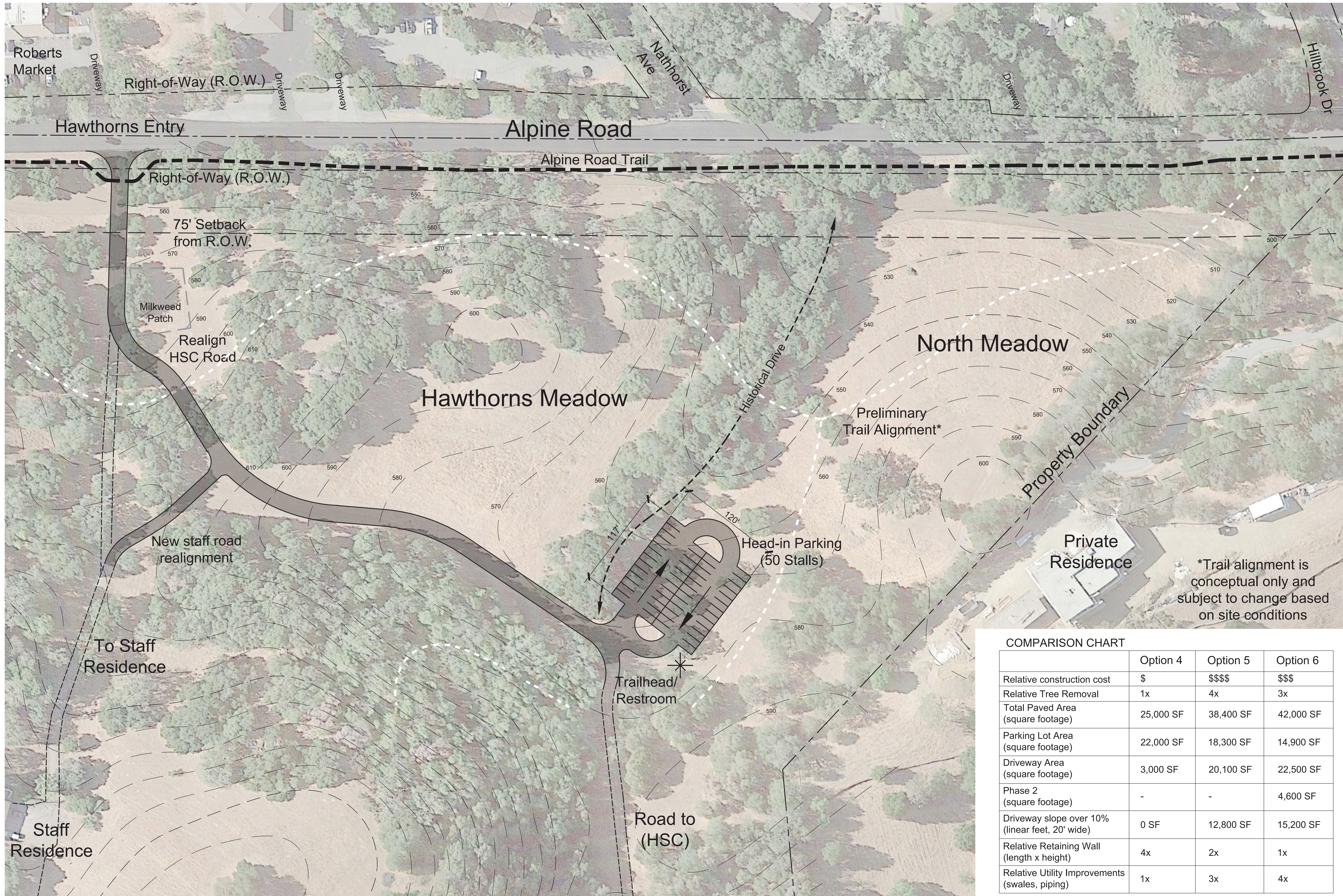


COMPARISON CHART

	Option 4	Option 5	Option 6
Relative construction cost	\$	\$\$\$\$	\$\$\$
Relative Tree Removal	1x	4x	3x
Total Paved Area (square footage)	25,000 SF	38,400 SF	42,000 SF
Parking Lot Area (square footage)	22,000 SF	18,300 SF	14,900 SF
Driveway Area (square footage)	3,000 SF	20,100 SF	22,500 SF
Phase 2 (square footage)	-	-	4,600 SF
Driveway slope over 10% (linear feet, 20' wide)	0 SF	12,800 SF	15,200 SF
Relative Retaining Wall (length x height)	4x	2x	1x
Relative Utility Improvements (swales, piping)	1x	3x	4x

HAWTHORNS AREA - OPTION 4 SCHEMATIC

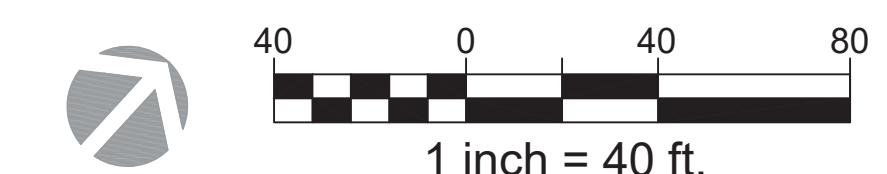


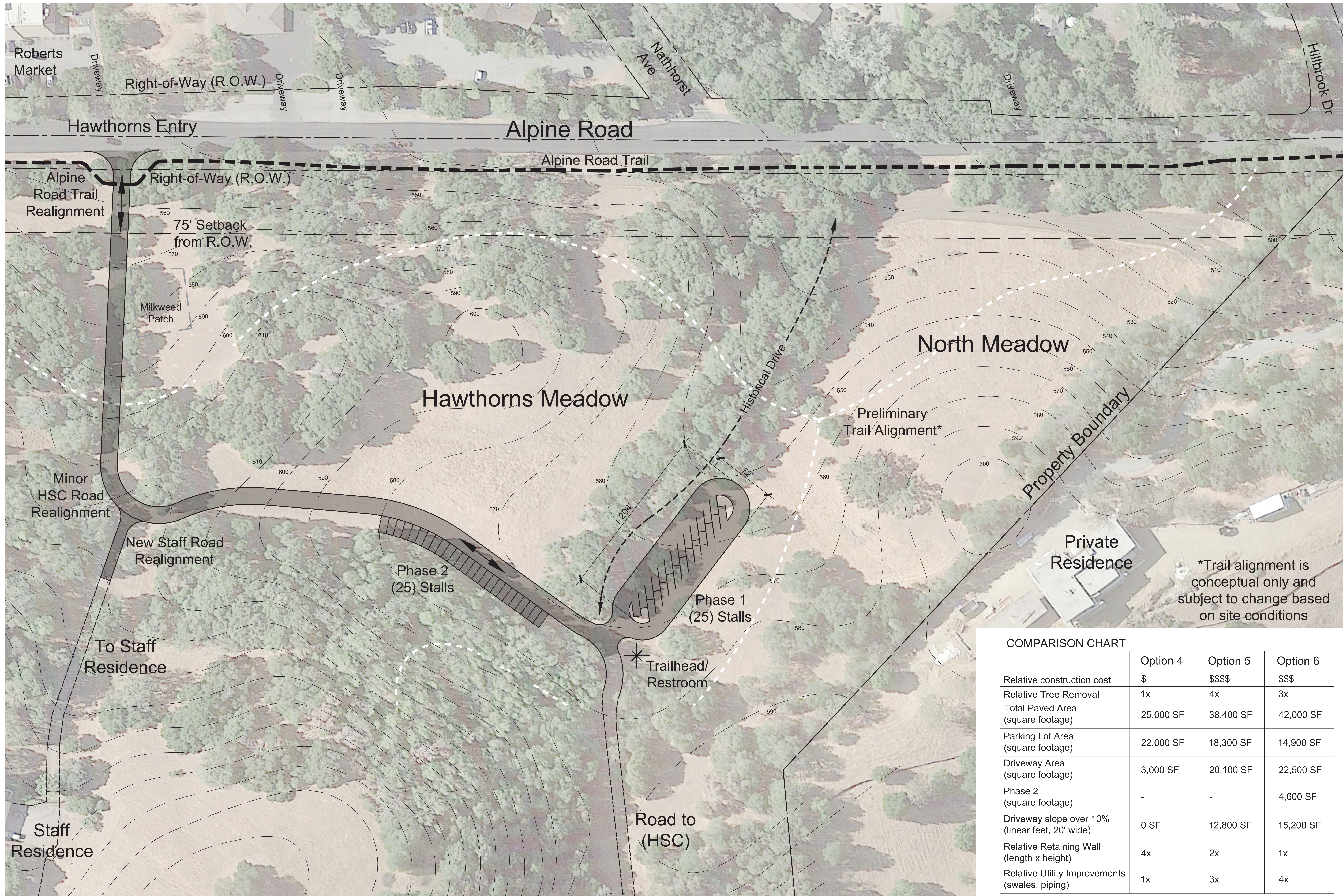


COMPARISON CHART

	Option 4	Option 5	Option 6
Relative construction cost	\$	\$\$\$\$	\$\$\$
Relative Tree Removal	1x	4x	3x
Total Paved Area (square footage)	25,000 SF	38,400 SF	42,000 SF
Parking Lot Area (square footage)	22,000 SF	18,300 SF	14,900 SF
Driveway Area (square footage)	3,000 SF	20,100 SF	22,500 SF
Phase 2 (square footage)	-	-	4,600 SF
Driveway slope over 10% (linear feet, 20' wide)	0 SF	12,800 SF	15,200 SF
Relative Retaining Wall (length x height)	4x	2x	1x
Relative Utility Improvements (swales, piping)	1x	3x	4x

HAWTHORNS AREA - OPTION 5 SCHEMATIC

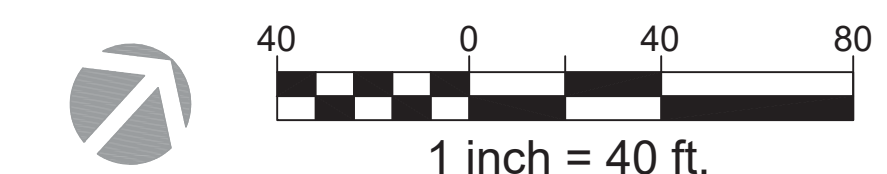


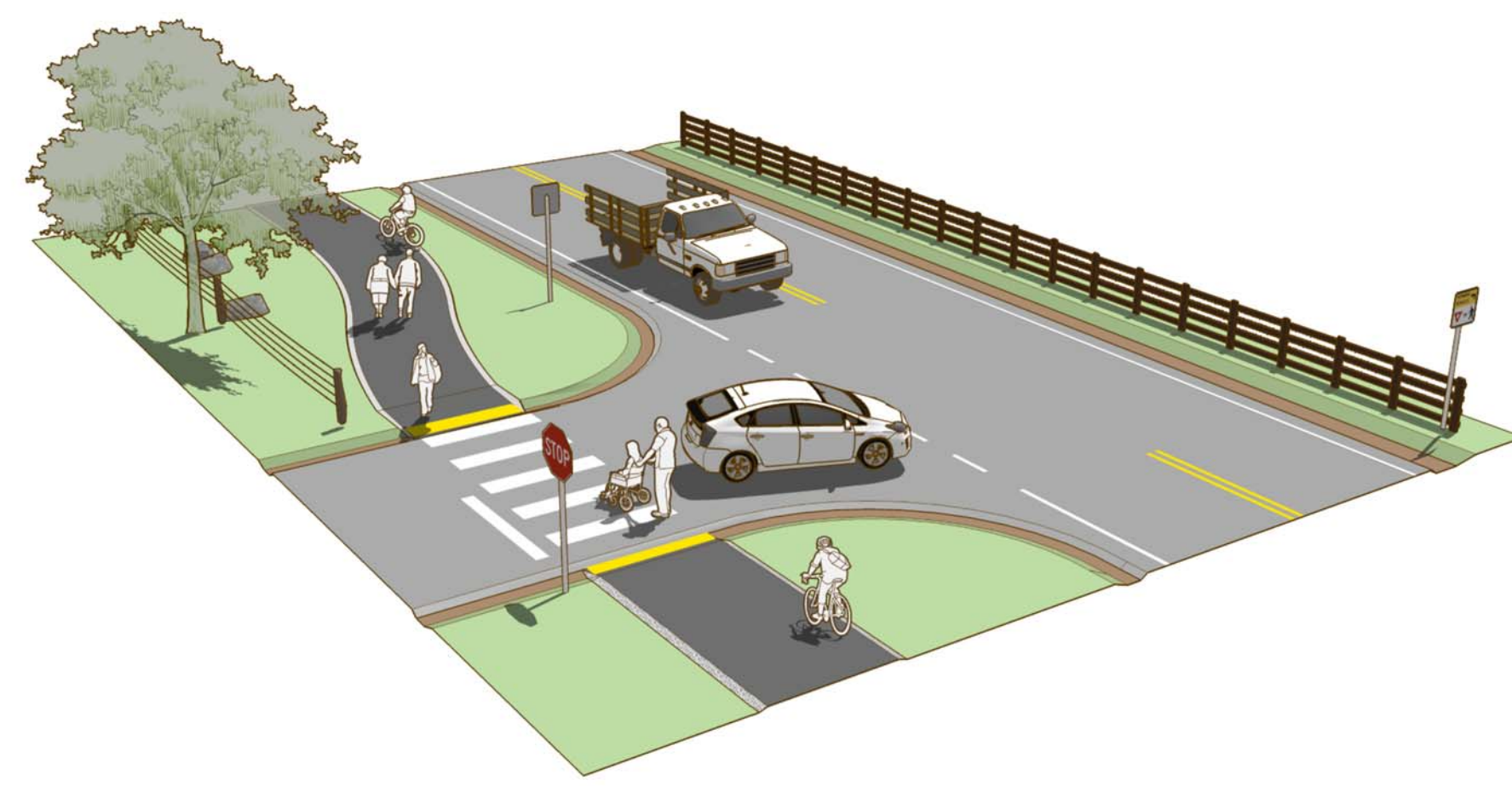


COMPARISON CHART

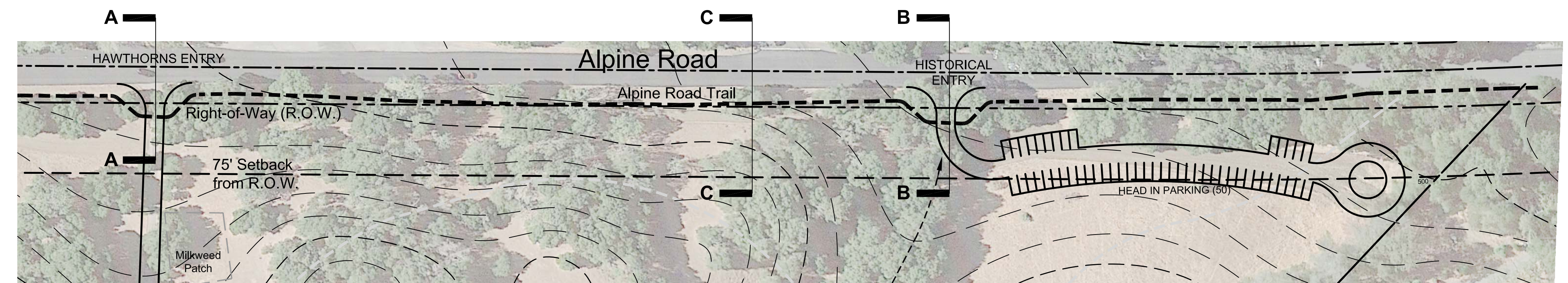
	Option 4	Option 5	Option 6
Relative construction cost	\$	\$\$\$\$	\$\$\$
Relative Tree Removal	1x	4x	3x
Total Paved Area (square footage)	25,000 SF	38,400 SF	42,000 SF
Parking Lot Area (square footage)	22,000 SF	18,300 SF	14,900 SF
Driveway Area (square footage)	3,000 SF	20,100 SF	22,500 SF
Phase 2 (square footage)	-	-	4,600 SF
Driveway slope over 10% (linear feet, 20' wide)	0 SF	12,800 SF	15,200 SF
Relative Retaining Wall (length x height)	4x	2x	1x
Relative Utility Improvements (swales, piping)	1x	3x	4x

HAWTHORNS AREA - OPTION 6 SCHEMATIC

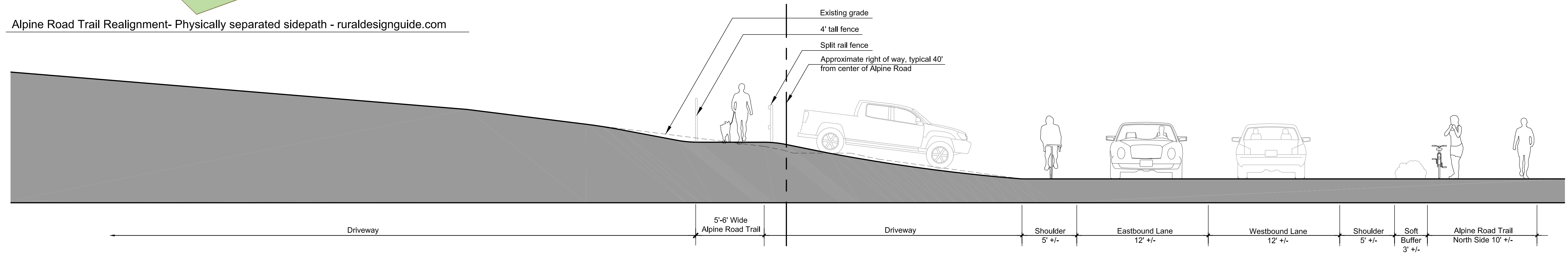




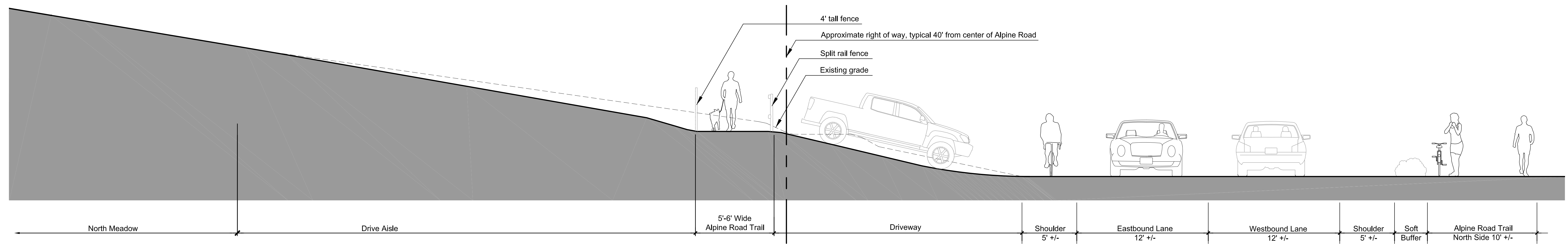
Alpine Road Trail Realignment- Physically separated sidepath - ruraldesignguide.com



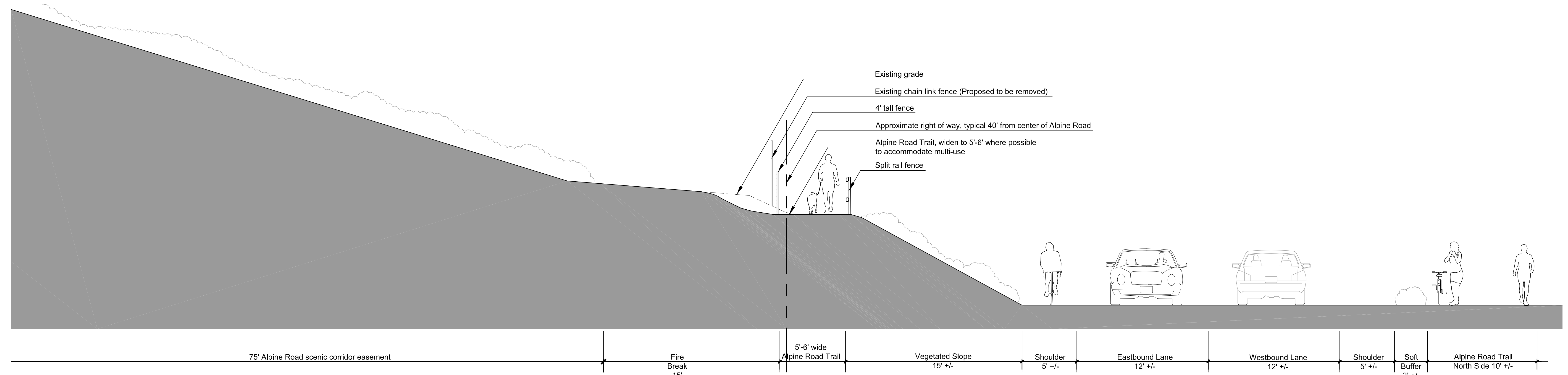
ALPINE ROAD - SECTION KEYMAP



SECTION A-A - HAWTHORNS MEADOW DRIVEWAY



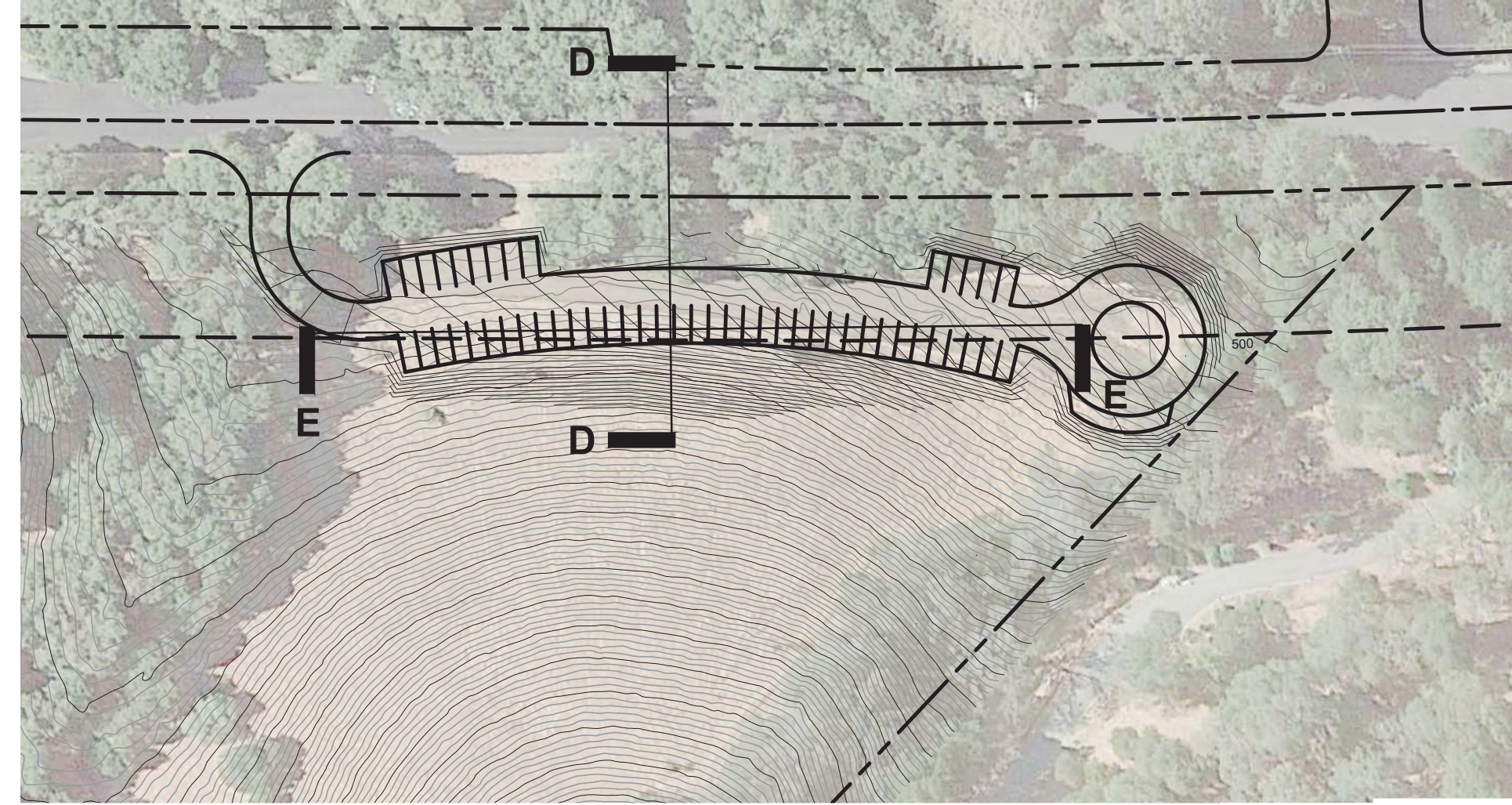
SECTION B-B - HISTORICAL ENTRY DRIVEWAY



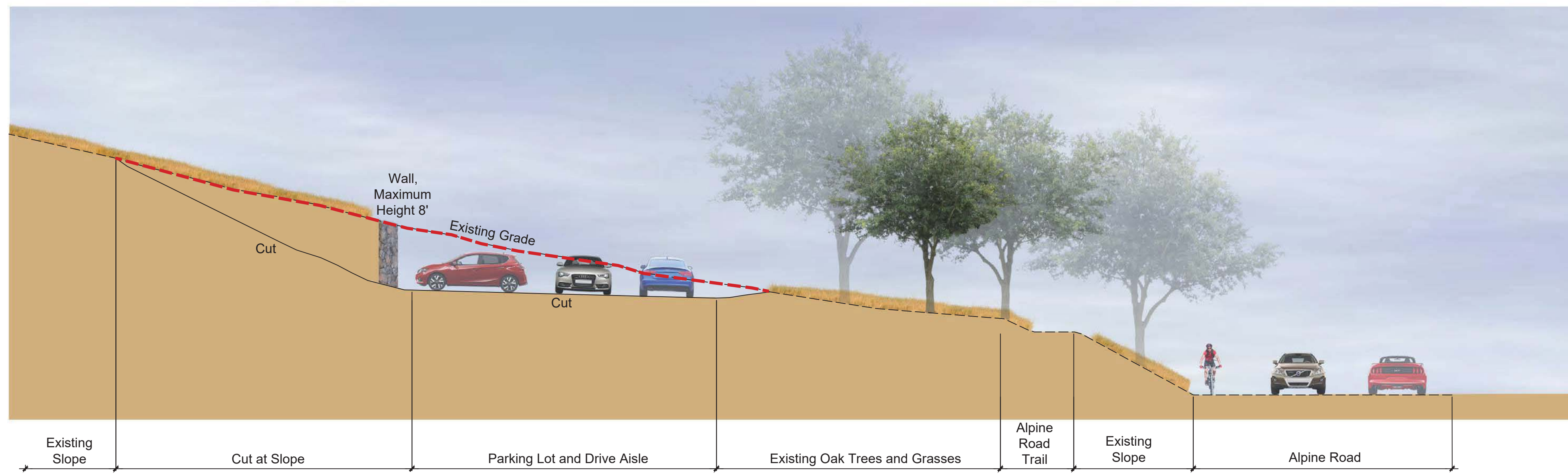
SECTION C-C - TYPICAL ALPINE ROAD TRAIL SECTION

HAWTHORNS AREA - ALPINE ROAD SECTIONS





OPTION 4 - SECTION KEYMAP



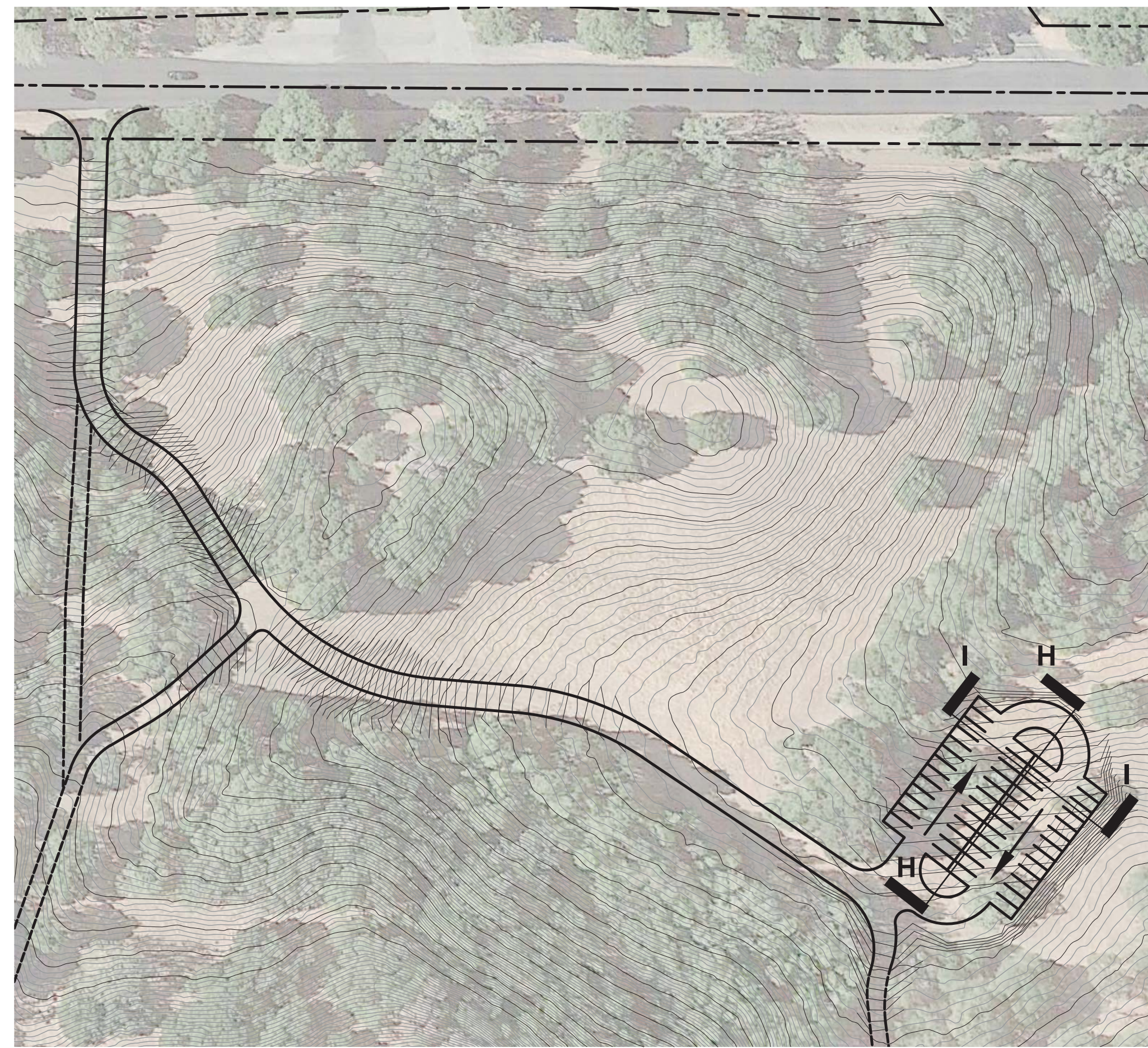
OPTION 4 - SECTION - D-D - PARKING LOT WIDTH



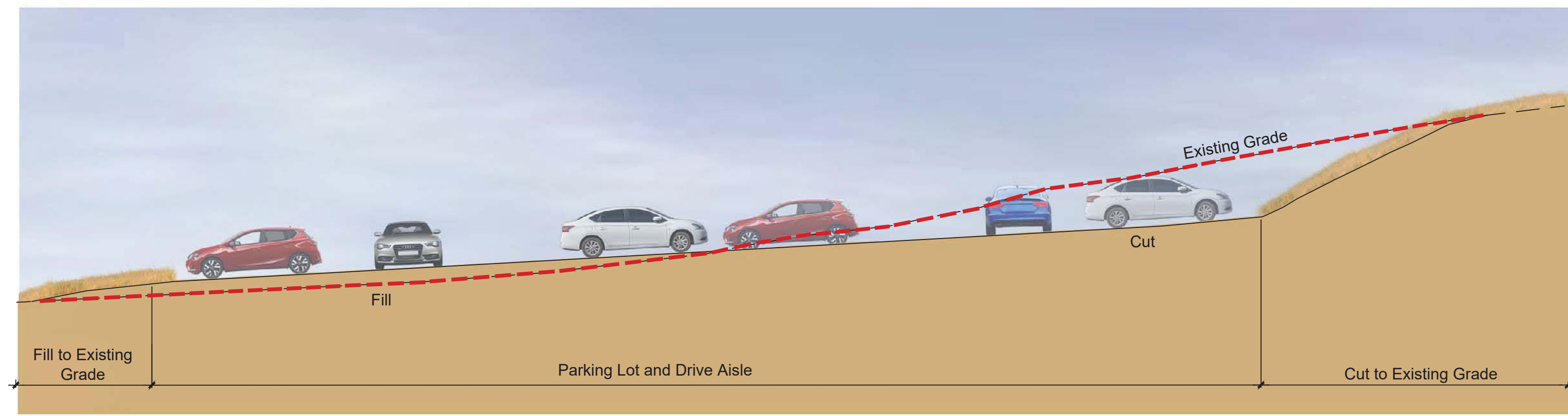
OPTION 4 - SECTION E-E - PARKING LOT LENGTHWISE

HAWTHORNS AREA - OPTION 4 PARKING LOT SECTIONS

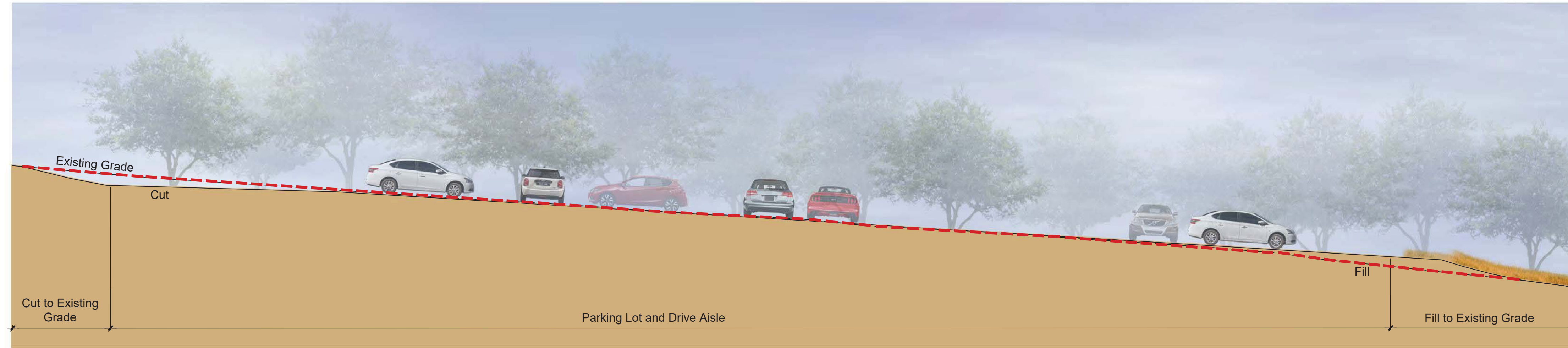




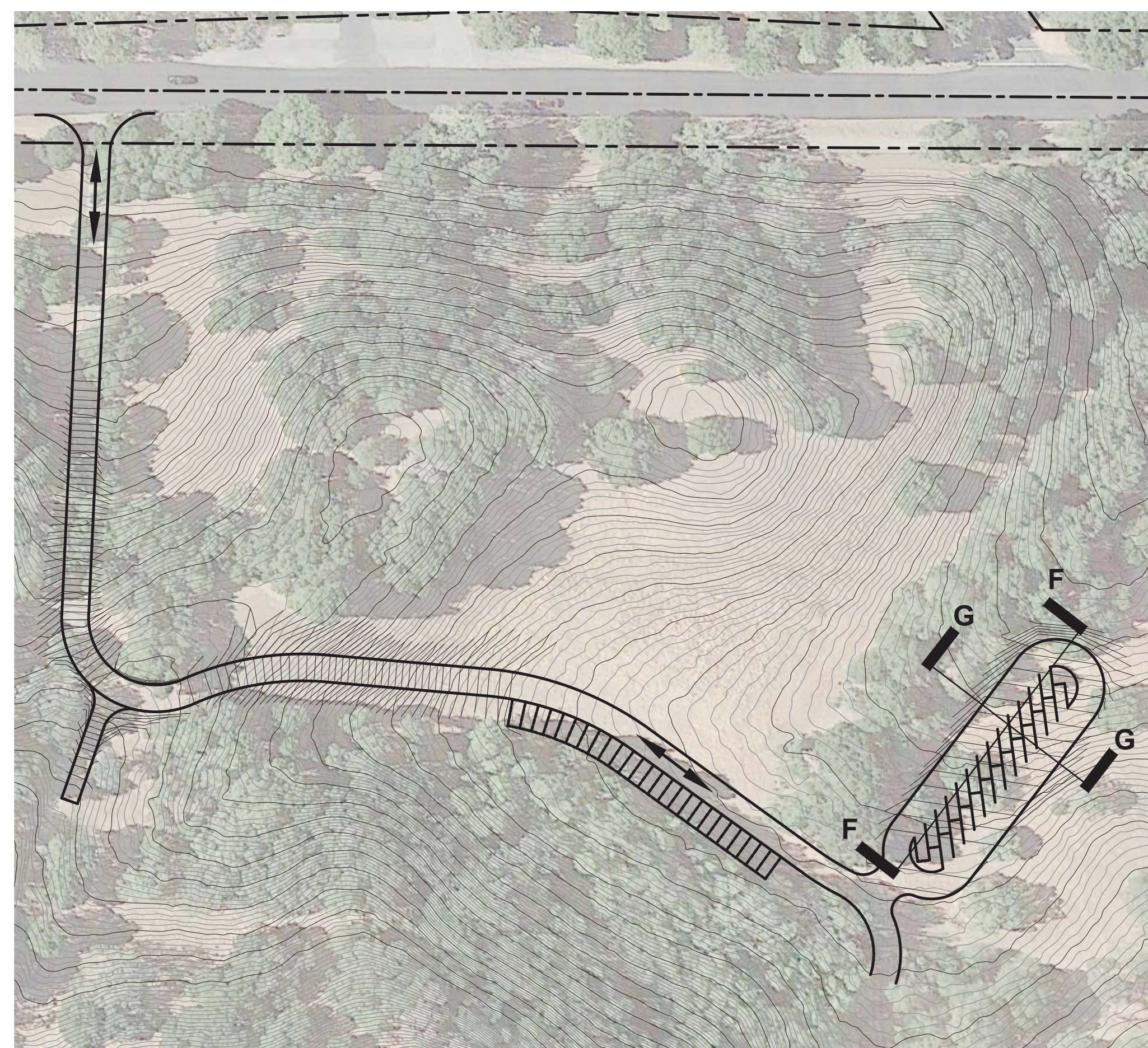
OPTION 5 - SECTION KEYMAP



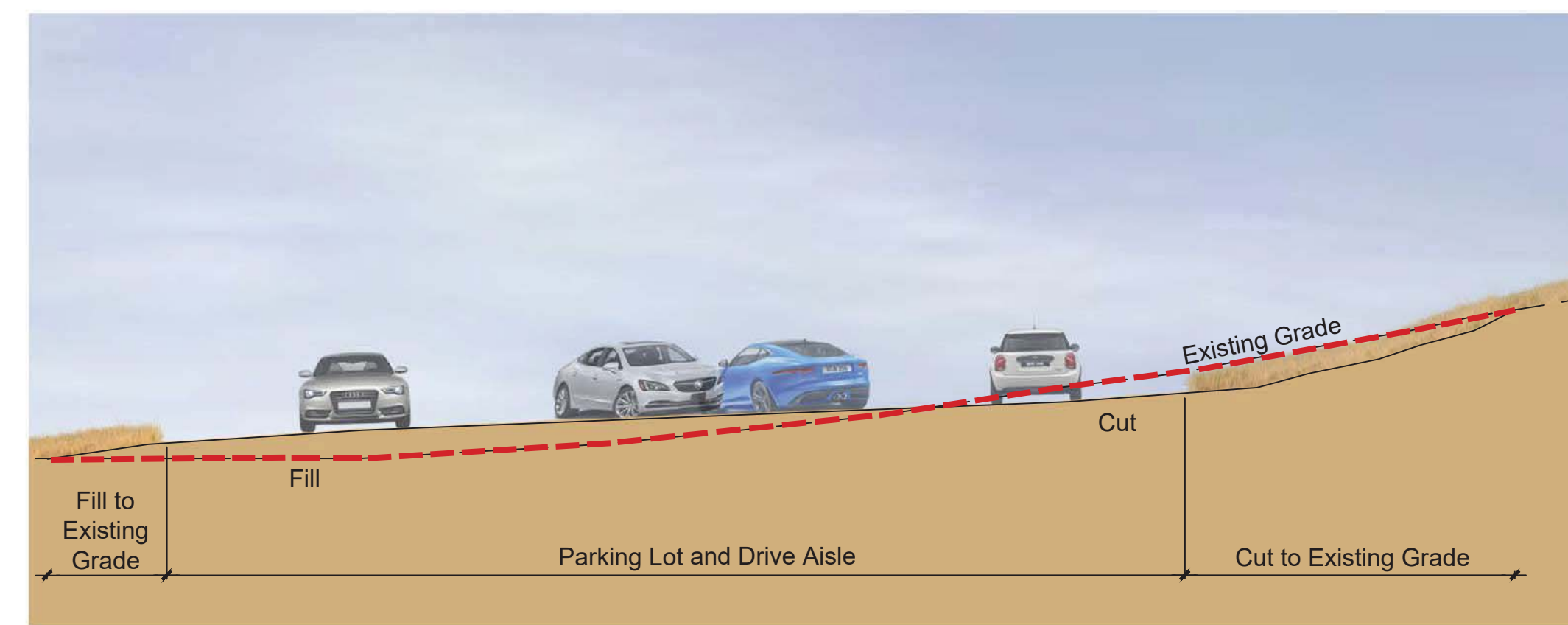
OPTION 5 - SECTION I-I - PARKING LOT WIDTH



OPTION 5 - SECTION H-H - PARKING LOT LENGTH



OPTION 6 - SECTION KEYMAP



OPTION 6 - SECTION G-G - PARKING LOT WIDTH



OPTION 6 - SECTION F-F PARKING LOT LENGTH

HAWTHORNS AREA - OPTION 5 & 6 PARKING LOT SECTIONS

Hawthorns Area Public Access Working Group Natural Resources Considerations




Hawthorns Area Plan

Over the past three meetings, our discussions have primarily revolved around the crucial topic of public access to the Hawthorns Area. While public access is a key objective of this project, protecting and restoring the natural environment is integral to Midpen's mission as a regional open space district. By preserving and restoring the environment, Midpen protects and enhances the resources and ecological processes we all depend on, ensuring their long-term viability for future generations.

As a well-informed community is essential for the success of any conservation effort, we have provided a natural resources analysis to demonstrate the interconnectedness of these considerations. The following analysis is an extension of the [Public Access Framework](#) shared in the orientation packet for the first PAWG meeting. Both the analysis and Public Access Framework are founded on [Midpen's Basic Policy](#), which directs staff to "follow management policies that ensure proper care of the land, that provide public access appropriate to the nature of the land, and that are consistent with ecological values and public safety." Moreover, "proper care for the land" is further defined and guided by the Board-approved [Resource Management Policies](#) and a resource management mission statement that states that "the District will protect and restore the diversity and integrity of its resources and ecological processes for their value to the environment and to people, and will provide for the use of the preserves consistent with resource protection."



We encourage you to weigh the natural resources considerations alongside other factors during your ongoing discussions. Your perspectives will play a critical role in shaping a balanced and sustainable plan for the Hawthorns Area.

Hawthorns Area Plan Conceptual Designs: Natural Resources Analysis

Design Option	Policy Alignment	Natural Resource Considerations	Relevant Resource Management Policies
4		<ul style="list-style-type: none"> ▪ Limits extent of built environment to property edge in already disturbed area near existing roadway, minimizing human impacts to the preserve ▪ Smallest footprint of total paved area and shortest driveway length ▪ Maintains integrity of meadows and sensitive vegetation communities, minimizes habitat fragmentation, and reduces impacts to habitat connectivity, supporting ecological resilience ▪ <i>Abuts riparian resources in northeast corner</i> ▪ <i>Necessitates some vegetation removal</i> 	<ul style="list-style-type: none"> ▪ Policy Water Resources-1 Protect surface and ground water from contamination. ▪ Policy Water Resources-2 Restore, maintain, or enhance water quality on District lands. ▪ Policy Geology and Soils-1 Locate and construct facilities to avoid high-risk areas subject to landslides, liquefaction, faulting, flooding, and erosion. ▪ Policy Geology and Soils -2 Minimize unnatural soil erosion and sedimentation. ▪ Policy Scenic and Aesthetic Resources-1 Minimize evidence of human impacts within preserves. ▪ Policy Scenic and Aesthetic Resources-3 Minimize unnatural noise within preserves. ▪ Policy Vegetation Management-1 Maintain the diversity of native plant communities. ▪ Policy Wildlife Management-2 Protect, maintain, and enhance habitat features that have particular value to native wildlife. ▪ Policy Cultural Resource Management-3 Protect cultural resources from disturbance to the maximum extent feasible. ▪ Policy Habitat Connectivity-2 Identify and protect existing habitat networks to prevent further compromise to ecosystem integrity. ▪ Policy Climate Change-4 Prepare for climate change impacts and promote resilience for both natural and built environments. ▪ Policy Integrated Pest Management-2 Take appropriate actions to prevent the introduction of new pest species to District preserves, especially new invasive plants in natural areas, rangelands, and agricultural properties. ▪ Policy Integrated Pest Management-4 Monitor pest occurrences and results of control actions and use adaptive management to improve results. ▪ Policy Wildland Fire Management-1 Implement necessary fire and fuel management practices to protect public health and safety, protect natural resources, and to reduce the impacts of wildland fire. ▪ Policy Wildland Fire Management-4 Manage District vegetation communities to reduce the risk of catastrophic fire and to maintain biological diversity and to promote resilience.
5		<ul style="list-style-type: none"> ▪ Sited away from riparian resources ▪ <i>Deviation from historic road alignment and proposed plans require significant grading and paving in a previously undisturbed area, resulting in the most <u>intensive</u> human impacts to the landscape as well as greatest potential adverse impacts to geologic and cultural resources</i> ▪ <i>Second greatest footprint of total paved area</i> ▪ <i>Necessitates the greatest tree removal and additional vegetation removal/construction of a shaded fuel break for wildland fire management</i> ▪ <i>Increases meadow fragmentation, reducing habitat quality, connectivity, and ecological resilience</i> 	
6		<ul style="list-style-type: none"> ▪ Sited away from riparian resources ▪ <i>Deviation from historic road alignment and proposed plans require significant grading and paving in <u>multiple</u> previously undisturbed areas, resulting in the most <u>extensive</u> human impacts to the landscape, as well as increased potential adverse impacts to geologic and cultural resources</i> ▪ <i>Greatest footprint of total paved area</i> ▪ <i>Necessitates second greatest tree removal and additional vegetation removal/construction of a shaded fuel break for wildland fire management, as well as reduction of native oak woodland</i> ▪ <i>Increases meadow fragmentation, reducing habitat quality, connectivity, and ecological resilience</i> 	

Hawthorns Area Plan Conceptual Designs: Natural Resources Analysis

Key:

-  No alignment with District policies
-  Somewhat aligned with District policies
-  Partially aligned with District policies
-  Mostly aligned with District policies
-  Full alignment with District policies

-  Adverse environmental impacts
-  Favorable environmental impacts