



TOWN OF PORTOLA VALLEY
Open Space Committee
Special Meeting July 16, 2024
5:30 PM

Betsy Morgenthaler, Chair
Nona Chiariello, Vice Chair
Ticien Sassoubre, Secretary
Gary Nielsen, Member
Beverly Lipman, Member
Terry Lee, Member
Carter Warr, Member

REGULAR MEETING

HISTORIC SCHOOLHOUSE – 765 PORTOLA RD. – PORTOLA VALLEY, CA

REMOTE MEETING ADVISORY: On March 1, 2023, all committees in Portola Valley will return to conducting in-person meetings. A Zoom link will be provided for members of the public to participate remotely; however, the Town cannot guarantee there will be no technical issues with the software during the meeting. For best public participation results, attending the meeting in-person is advised.

ASSISTANCE FOR PEOPLE WITH DISABILITIES

In compliance with the Americans with Disabilities Act, if you need special assistance to participate in this meeting, please contact the Town Clerk at (650) 851-1700 or by email at towncenter@portolavalley.net. Notification 48 hours prior to the meeting will enable the Town to make reasonable arrangements to ensure accessibility to this meeting.

VIRTUAL PARTICIPATION VIA ZOOM

To access the meeting by computer:

<https://us06web.zoom.us/j/86777262484?pwd=ROCbWwifC2xjh0zCqJJtZYRjBNAtYG.1>

Webinar ID: 867 7726 2484

Passcode: 004032

To access the meeting by phone:

1-669-900-6833 or 1-888-788-0099 (toll-free)

*Mute/Unmute – Press *6 / Raise Hand – Press *9*

1. CALL TO ORDER & ROLL CALL

2. ORAL COMMUNICATIONS FOR ITEMS NOT ON THE AGENDA

Speakers' time is limited to three minutes.

3. MINUTES

4. OLD BUSINESS:

- a. (a) The Study Session on Dorothy Ford Open Space will continue with a focus on the physical environment, associated setbacks and other restrictions, and other public access such as trails. (See attachment)

- b. Hawthorns Area, PAWG Meeting #7, 6/13/24 Update Agenda link:

https://www.openspace.org/sites/default/files/Hawthorns%20PAWG%20Mtg%207%20-%20PACKET_Revised%20240611.pdf

Attachment: Access & parking options 9 and 10 shown here will advance to Midpen District Planning & Natural Resources Committee.

5. ADJOURNMENT

Land Acknowledgement:

The Town of Portola Valley acknowledges the colonial history of this land we dwell upon—the unceded territory of the Ramaytush (rah-my-toosh) Ohlone, Tamien Nation, and Muwekma (mah-WEK-mah) Ohlone, who endured a human and cultural genocide that included removal from their lands and their sacred relationship to the land. Portola Valley recognizes that we profit from the commodification of land seized from indigenous peoples and now bear the ecological consequences. We seek to understand the impact of these legacies on all beings and to find ways to make repair

Portola Valley Open Space Committee

Study sessions on Dorothy Ford Open Space: DRAFT summary of May 2, 2024; topics for July 16

Background

Protection of open space and the natural environment benefits people physically, mentally, spiritually, intellectually, and economically. Open spaces capture precipitation, restore ground water, reduce air pollution, and create microenvironments that sustain native biodiversity. Access to open space helps people of all ages to reduce stress, improve physical fitness, and connect with the natural world and with each other.

Portola Valley is unusually fortunate in having large parcels that provide those benefits to an entire region, as well as small, town-owned open spaces that are of special benefit at the neighborhood scale. The Open Space Committee is working to articulate a vision for each of the major town-owned open space parcels—Spring Down, Frog Pond, Dorothy Ford Park, and Shady Trail. As appropriate for each parcel, the vision statement might address the parcel's history, conservation value, public use, protective measures, and major needs. Of special note is that each of these four parcels includes a freshwater habitat such as a creek, riparian corridor, or ephemeral pond, which are habitats of special significance in California.

Dorothy Ford Park and Open Space

The Open Space Committee's current focus is Ford Open Space (FOS). The committee's May 2, 2024 meeting included a study session on this parcel's **conservation value**. The discussion emphasized four main themes that will be refined in the vision statement for Ford Open Space:

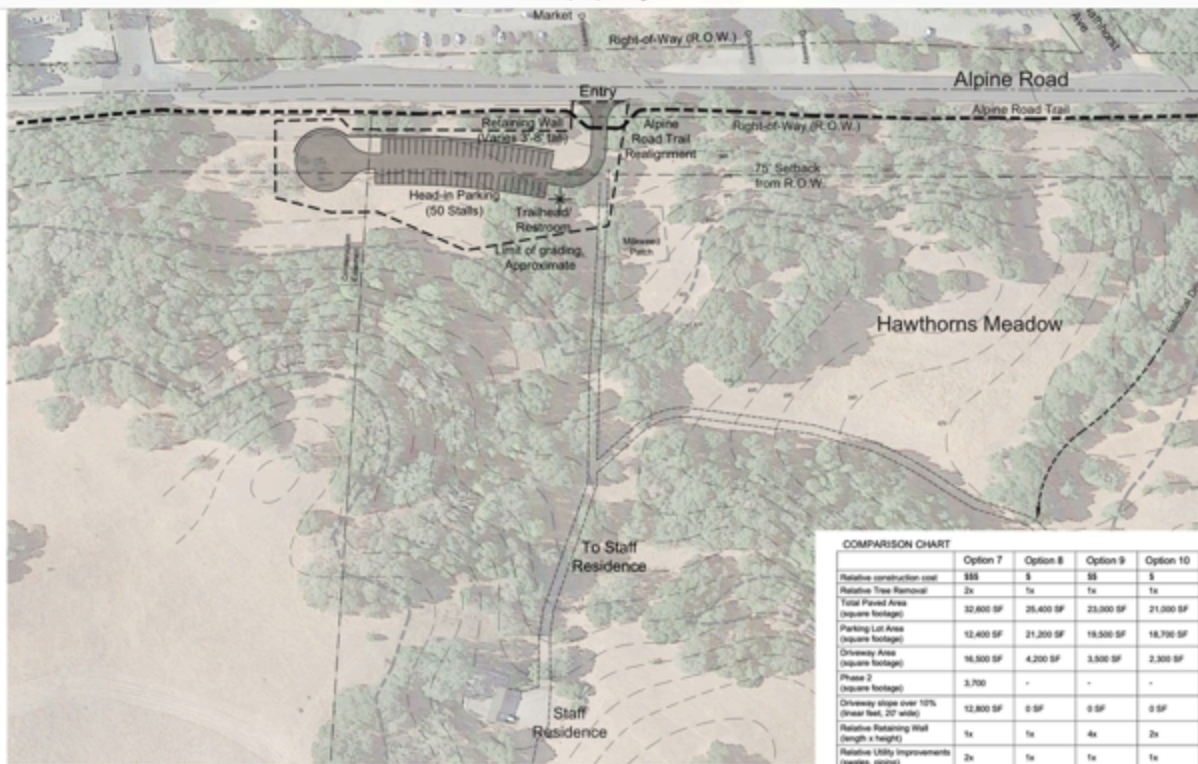
Ford Open Space is a riparian corridor, which is a habitat of special significance. Los Trancos Creek defines the long eastern boundary of FOS and is the dominant factor in its ecological properties and conservation value. Within FOS, the banks of Los Trancos Creek support native riparian woodland, including a tree canopy of Coast Live oak, California bay, buckeye and madrone, and a largely native understory with numerous woodrat dens. It is estimated that the acreage of riparian habitat in California has declined to less than ten percent of what was present pre-European.

Outside the band of closed-canopy woodland, Ford Open Space has a remnant of Valley Oak savanna, which is also a habitat of special significance. Ford Open Space's deep alluvial soil allows Valley Oaks to reach and maintain a towering size. Its two most massive Valley Oaks were nearly as large ninety years ago as they are today, an indicator of their longevity. At the drip line of these two giants, some young Valley Oaks have established. This is in sharp contrast with the regeneration failure of Valley Oaks in many unprotected areas in California.

Historical maps provide evidence of natural, longterm creek bank stabilization by the woody riparian vegetation. Los Trancos Creek's highly sinuous channel—concealed

within aerial photographs by trees, but clear within terrain imaging—is characteristic of meanders that formed naturally through erosion and sedimentation by a creek in a gently tilted valley. However, the creek’s meanders today are strikingly similar to pre-1900 maps of the stream channel. This relative stability is consistent with the ways in which mature riparian woodland can help stabilize creek banks and shape aspects of the creek profile, such as deep pools. This illustrates the importance of woodland protection.

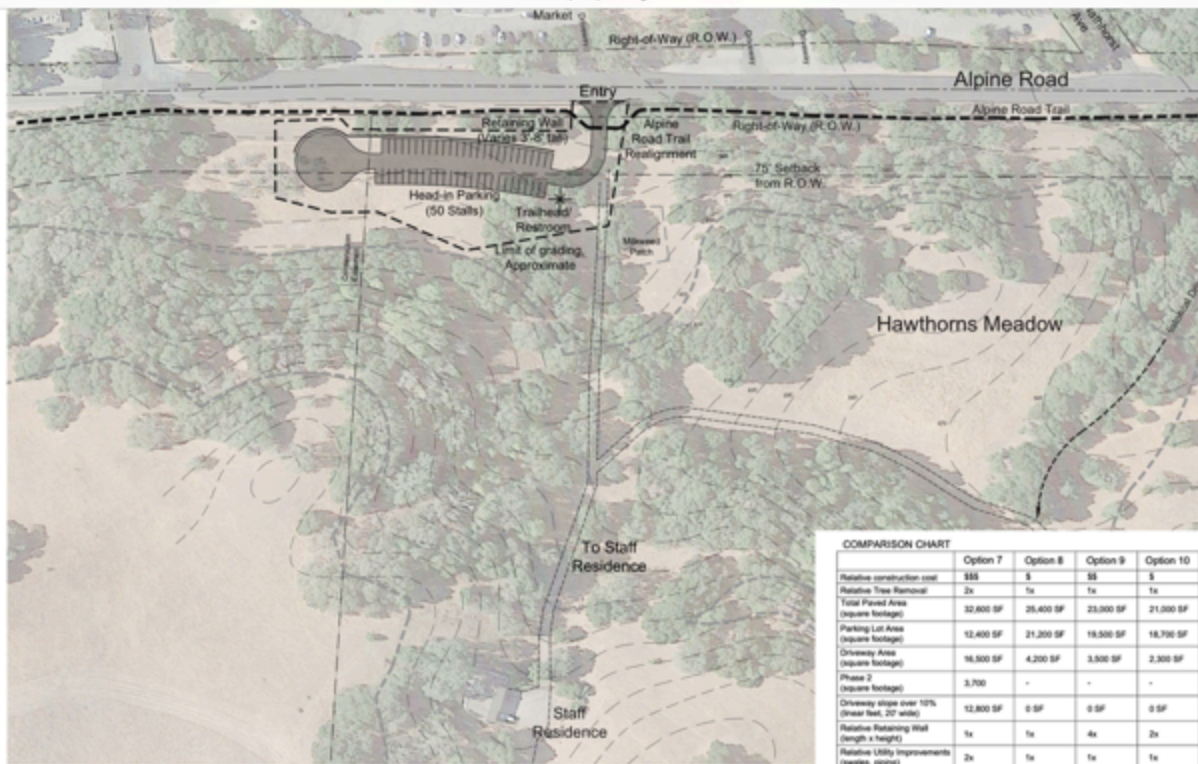
Ford Open Space is a link in a chain of riparian habitats that benefit many species. FOS is situated in the lower reaches of the 7sq mi Los Trancos watershed, whose headwaters include large protected areas in two counties, and which is a subwatershed of the San Francisquito Creek watershed. The richness of this chain of habitats is indicated by the presence of special-status wildlife species such as Steelhead trout, Dusky-footed woodrats, and various raptors; there are also historical records of red-legged frogs. The ecological condition of Ford Open Space can affect species and ecological conditions both downstream and upstream.



COMPARISON CHART

	Option 7	Option 8	Option 9	Option 10
Relative construction cost	\$55	\$	\$5	\$
Relative Tree Removal	2x	1x	1x	1x
Total Paved Area (square footage)	32,600 SF	26,400 SF	23,900 SF	21,000 SF
Parking Lot Area (square footage)	12,400 SF	21,200 SF	18,500 SF	16,700 SF
Driveway Area (square footage)	16,500 SF	4,200 SF	3,500 SF	2,300 SF
Phase 2 (square footage)	3,700	-	-	-
Driveway slope over 10% (linear feet, 20' wide)	12,800 SF	0 SF	0 SF	0 SF
Relative Retaining Wall (length x height)	1x	1x	4x	2x
Relative Utility Improvements (sewers, piping)	2x	1x	1x	1x

HAWTHORNS AREA - OPTION 9

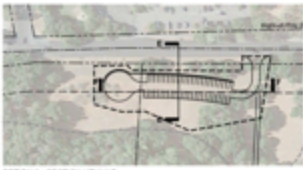


COMPARISON CHART

	Option 7	Option 8	Option 9	Option 10
Relative construction cost	\$55	\$	\$5	\$
Relative Tree Removal	2x	1x	1x	1x
Total Paved Area (square footage)	32,600 SF	26,400 SF	23,900 SF	21,000 SF
Parking Lot Area (square footage)	12,400 SF	21,200 SF	18,500 SF	16,700 SF
Driveway Area (square footage)	16,500 SF	4,200 SF	3,500 SF	2,300 SF
Phase 2 (square footage)	3,700	-	-	-
Driveway slope over 10% (linear feet, 20' wide)	12,800 SF	0 SF	0 SF	0 SF
Relative Retaining Wall (length x height)	1x	1x	4x	2x
Relative Utility Improvements (sewers, piping)	2x	1x	1x	1x

HAWTHORNS AREA - OPTION 9

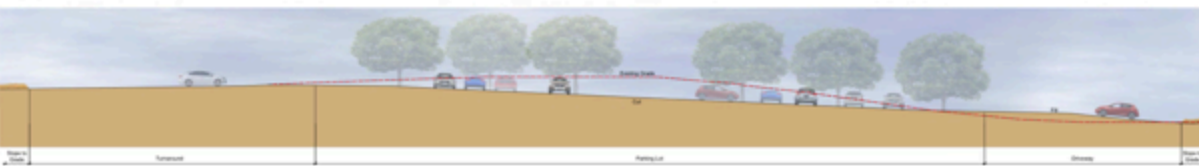




OPTION 9 - SECTION A-E (TRAMP)



OPTION 9 - SECTION E-E - PARKING LOT WIDTH



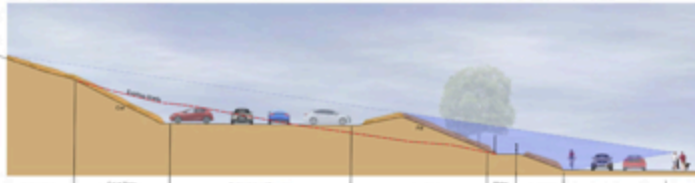
OPTION 9 - SECTION F-F - PARKING LOT LENGTHWISE

HAWTHORNS AREA - OPTION 9 PARKING LOT SECTIONS





OPTION 10 - SECTION KEYMAP



OPTION 10 - SECTION: D-G - PARKING LOT WIDTH



OPTION 10 - SECTION: H-I - PARKING LOT LENGTHWISE

HAWTHORNS AREA - OPTION 10 PARKING LOT SECTIONS