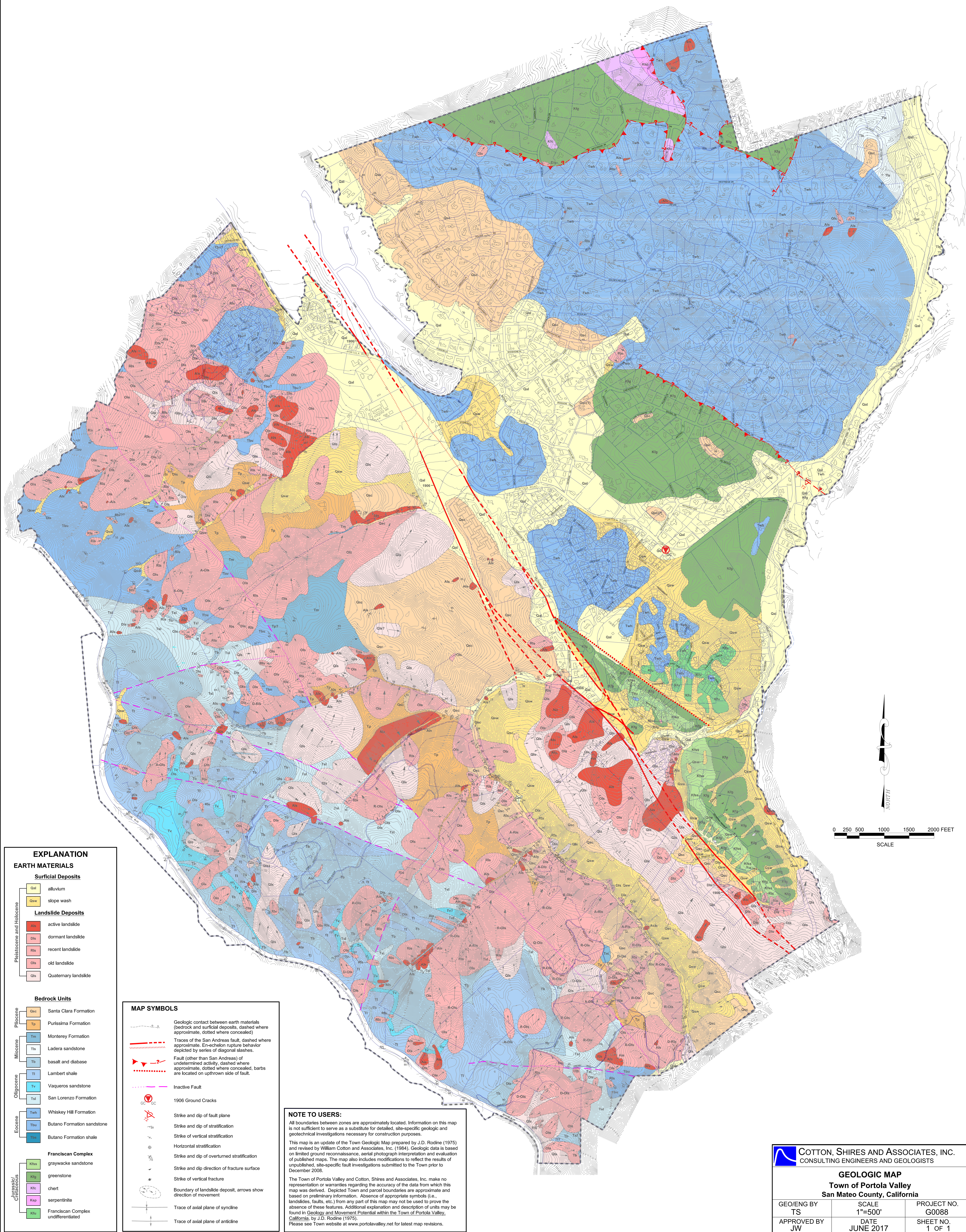
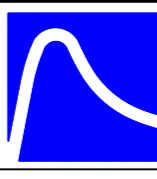


# GEOLOGIC MAP

## Town of Portola Valley, California



**NOTE TO USERS:**  
 All boundaries between zones are approximately located. Information on this map is not sufficient to serve as a substitute for detailed, site-specific geologic and geotechnical investigations necessary for construction purposes.  
 This map is an update of the Town Geologic Map prepared by J.D. Rodine (1975) and revised by William Cotton and Associates, Inc. (1994). Geologic data is based on limited ground reconnaissance, aerial photograph interpretation and evaluation of published maps. The map also includes modifications to reflect the results of unpublished, site-specific fault investigations submitted to the Town prior to December 2008.  
 The Town of Portola Valley and Cotton, Shires and Associates, Inc. make no representation or warranties regarding the accuracy of the data from which this map was derived. Depicted Town and parcel boundaries are approximate and based on preliminary information. Absence of appropriate symbols (i.e., landslides, faults, etc.) from any part of this map may not be used to prove the absence of these features. Additional explanation and description of units may be found in *Geology and Movement Potential within the Town of Portola Valley, California*, by J.D. Rodine (1975).  
 Please see Town website at [www.portolavalley.net](http://www.portolavalley.net) for latest map revisions.

 <b>COTTON, SHIRES AND ASSOCIATES, INC.</b> CONSULTING ENGINEERS AND GEOLOGISTS		
<b>GEOLOGIC MAP</b> <b>Town of Portola Valley</b> <b>San Mateo County, California</b>		
GEO/ENG BY TS	SCALE 1"=500'	PROJECT NO. G0088
APPROVED BY JW	DATE JUNE 2017	SHEET NO. 1 OF 1